

# WingtraOne

GEN II

Technical specifications



<b>01</b>	<b>Fast and accurate survey data every time</b>	<b>1</b>
<b>02</b>	<b>Accuracy FAQ*</b>	<b>3</b>
<b>03</b>	<b>Technical specifications WingtraOne Gen II</b> Hardware <b>Flying in wind*</b> Operations <b>Flight time, coverage and job time*</b> Results Software & tablet Data link Battery Battery charger	<b>4</b>
<b>04</b>	<b>Technical specifications cameras</b> RGB cameras nadir RGB camera oblique GSD overview RGB nadir cameras GSD overview RGB oblique camera Multispectral camera GSD overview multispectral cameras	<b>15</b>

\* Blue sections in this brochure will help you understand the intricacies of drone operations and how the environment and mission architecture influence drone performance and output. We therefore recommend that you read them carefully. With any arising questions, please contact Wingtra at [support@wingtra.com](mailto:support@wingtra.com)

# Fast and accurate survey data every time



- ✓ Cut mapping time
- ✓ Reduce labor costs
- ✓ Move on with other projects

**Maximum coverage with one flight\***  
at 1.9 cm/px (0.75 in/px) GSD



**WingtraOne RGB61**  
61 MP camera  
310 ha (766 ac)  
120 m (400 ft)



**Other fixed-wing drones**  
20 MP camera  
170 ha (420 ac)  
93 m (305 ft)



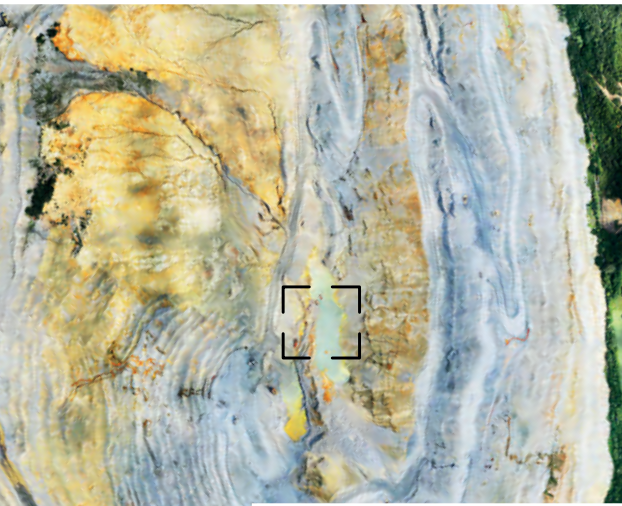
**Multicopter drones**  
20 MP camera  
29 ha (71 ac)  
69 m (226 ft)



## Do a lot of work

WingtraOne drones enable faster data collection for large sites, surpassing other tools. Mapping previously impossible projects like highways, industrial complexes, and mines now takes just a few hours.

\* Numbers refer to most widely used competitor drone and camera models. This number can vary depending on factors such as overlap, altitude and drone and camera model. The model takes into account data collection only. Flight planning, setting up GCPs, data processing, time to relocate between flights are not taken into account in this model.



## Get high accuracy data everytime

WintraOne drone, with its advanced technology including a multi-frequency PPK GNSS receiver and a 61 MP sensor, ensures industry-leading horizontal accuracy of 1 cm (0.4 in) without GCPs.\*



Absolute horizontal accuracy down to

# 1 cm\*\*

(0.4 in)

GSD down to

# 0.7 cm/px

(0.3 in/px)



## A drone that's easy to use

WingtraOne's user-friendly design and VTOL capabilities allow surveyors with minimal training to easily collect data in challenging environments. Take off and land in confined spaces or rough terrain with ease.

\*\* This level of accuracy is achievable under optimal conditions, on hard surfaces, using a well-established base station or correction data from a CORS network. The results can be validated with high-accuracy checkpoints. See Accuracy FAQ on the following page for more details.

# Accuracy FAQ

Wondering about Wingtra's 1 cm (0.4 in) horizontal absolute accuracy and how the results were validated? Below you will find a summary of the most frequently asked questions we get related to accuracy. To get the full picture, please read Wingtra's white paper available at [wingtra.com/drone-survey-accuracy](https://wingtra.com/drone-survey-accuracy)

## What equipment was used to perform the survey?

WingtraOne PPK drone with a 42 MP Sony RX1R II camera.

## Did you use GCPs for processing?

No, we did not use GCPs for processing as photogrammetry software is sensitive to the accuracy and distribution of GCPs, i.e., they can introduce tensions in the block adjustment.

i

Targets on the ground with known locations are called either ground control points (GCPs), when used for georeferencing, or checkpoints, when used only to validate accuracy after georeferencing. Checkpoints have no influence on the outputs.

## How exactly did you validate the accuracy?

We performed two independent tests in the US and Switzerland. In Switzerland, we used a set of five checkpoints from the Institute of Geodesy and Photogrammetry at ETH Zurich. For research purposes, the institute defined the locations of these points within 2 mm (0.08 in) horizontal and 4 mm (0.16 in) vertical accuracy. Their accuracy is based on a high-accuracy network combining total stations and static long-time GNSS measurements. These measurements are then integrated into a stochastic model that takes into account the accuracy of each device ([Januth, T. \(2017\), chapter three](#))\*.

In the US (Phoenix), Wingtra used two **HiPer V GNSS** antennas from Topcon. One was set up as a base station and was logging for around three hours. The second was set up as a rover using the correction data from the local base to measure the nine checkpoints. Due to the small baseline between the rover and the base station, the coordinates were defined at sub-centimeter level relative to the base.

## What measurement of accuracy are you using?

We used root mean square error (RMSE) on five (ETH) and nine (Phoenix) checkpoints and measured not just for one but over 14 flights.

## Is this accuracy valid for every point of the point cloud?

Due to the variable quality of photogrammetry, we can only qualify validated checkpoints to achieve this level of accuracy and not all points in the point cloud. Some individual points might have varying accuracy which can be observed as noise in the point cloud (e.g. over asphalt or close to water).

## What GSD is your accuracy based on?

0.8 cm (0.3 in).

## How are you extracting the position of the checkpoints? Orthophoto, point cloud, DEM, or a mixture of the above?

Checkpoints are manually measured in the aerial triangulation, and are part of the tie points (=coarse point clouds). This is the common method based on the usual photogrammetry software.

## Is this accuracy claim with respect to a global or local CRS?

All calculations have been done in WGS84 and CH1903+, the latter being local but derived from CHTR95 and ETRS89, which are global.

## Is this accuracy claim valid for height, plan or 3D?

The 1 cm (0.4 in) accuracy claim refers to horizontal accuracy. As with all aerial mapping solutions, vertical absolute accuracy (RMS) for the WingtraOne RX1R II with PPK is slightly worse, i.e., down to 3 cm (1.2 in).

## Where can I get more details?

You can read the white paper and download the raw data under [wingtra.com/drone-survey-accuracy/](https://wingtra.com/drone-survey-accuracy/). Or contact us at [support@wingtra.com](mailto:support@wingtra.com) for further questions.



# Technical specifications WingtraOne GEN II

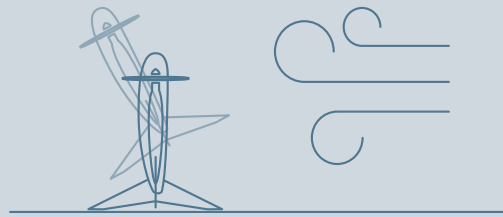
## Hardware

Drone type	Tailsitter vertical take-off and landing (VTOL)
Maximum take-off weight	4.5 kg (9.9 lb)
Weight (with batteries)	3.7 kg (8.1 lb)
Maximum payload weight	800 g (1.8 lb)
Wingspan	125 cm (4.1 ft)
Dimensions of WingtraOne	125 × 68 × 12 cm (4.1 × 2.2 × 0.4 ft) (without middle stand)
Dimensions of Pilot Box	57 × 37 × 20 cm, 8.6 kg (1.8 × 1.2 × 1.0 ft, 19 lb)
Battery capacity	Two 99 Wh batteries (required as a pair)
Battery type	Li-ion, smart battery technology, UN3481 compliant
Radio link	Bi-directional 10 km (6 mi) in direct line of sight, obstacles reduce the range
Onboard GPS	Redundant, using GPS (L1, L2), GLONASS (L1, L2), Galileo (L1) and BeiDou (L1) Frequencies range: 1227.6 MHz / 1242.9375-1251.6875 MHz / 1561,098 MHz / 1575,42 MHz / 1598.0625-1609.3125 MHz / 1602,00 MHz
Dimensions of travel hardcase (optional)	137 × 67 × 23 cm (54 × 26 × 9 in)
Weight of travel hardcase including the drone	18.6 kg (41 lb)

# Flying in wind

WingtraOne can safely fly and capture data in sustained winds up to 12 m/s (27 mph) and gusts up to 18 m/s (40 mph).

12 m/s (27 mph) sustained wind at cruise height (120 m, 400 ft) corresponds to approximately 8 m/s (19 mph) measured on the ground with the wind measurement tool provided in the Wingtra pilot box.



	Max sustained wind	Max wind gusts	Max sustained wind on the ground
	Wind measured by the drone in cruise height over more than 30 seconds	Brief increase in the speed of the wind for less than 30 seconds.	Wind measured on the ground by the wind tool provided in the Wingtra pilot box (average over 30 seconds)
<b>m/s</b>	12 m/s	18 m/s	8 m/s
<b>km/h</b>	43 km/h	65 km/h	29 km/h
<b>mph</b>	27 mph	40 mph	19 mph

- ☑ We recommend measuring the wind on the ground. Do not fly if you measure more than 8 m/s (19 mph) over 30 seconds (sustained wind).
- ☑ If the wind speed during cruise flight exceeds 12 m/s (27 mph) for more than 30 seconds (sustained wind), WingtraOne will automatically return home as the data integrity can no longer be guaranteed.
- ☑ Flight time may be affected by wind (see detailed section on flight time on the next page).

## Tipping expectations

Strong winds and uneven ground can cause the WingtraOne to tip over. Generally, this is not a problem since only some scratches might occur while the robustness of the system is not compromised.

Landings in the home point zone are always very accurate and predictable compared to belly landings. In light winds and calm conditions, WingtraOne lands smoothly on its tail.

Sustained wind measured on ground*	Tipping expectations
0-5 m/s (0-11 mph)	Tippings rarely occur
5-8 m/s (11-19 mph)	Tippings can occur
> 8 m/s (> 19 mph)	Not recommended to fly

## Operation

<b>Flight speed</b>	Operational cruise speed	16 m/s (35.8 mph)
	Climb / sink cruise	6 / 3 m/s (13.4 / 6.7 mph)
	Climb / sink hover	6 / 2.5 m/s (13.4 / 5.6 mph)
<b>Wind resistance</b>	Max sustained wind	12 m/s (27 mph)
	Max wind gusts	18 m/s (40 mph)
	Max sustained wind on the ground	8/ms (19 mph)
See page 5 for detailed information on how WingtraOne handles wind.		
<b>Maximum flight time</b>	Up to 59 min See next page or <a href="https://knowledge.wingtra.com/flight-time">knowledge.wingtra.com/flight-time</a> for what flight time to expect in different flying conditions	
<b>Temperature</b>	-10 to +40 °C (+14 to +104 °F)	
<b>Maximum take-off altitude above sea level</b>	2500 m (8200 ft); with high-altitude propellers it is possible to take off from up to 4800 m (15,700 ft) and fly up to 5000 m (16,400 ft) AMSL	
<b>Weather</b>	IP54, not recommended to fly in fog, rain and snow	
<b>Ground control points required</b>	No (with PPK option); using 3 checkpoints to verify the accuracy is recommended	
<b>Auto-landing accuracy</b>	< 2 m (< 7 ft)	



# Flight time, coverage and job time

WingtraOne’s maximum tested flight time is 59 minutes. However, the flight time of any drone is influenced by many factors, so it will not be uniform throughout different missions. In any case, coverage and job time are determined by more factors than just flight time, namely flight speed and payload.

## Flight time

- ✓ **Payload**  
Using a heavier payload reduces flight time. For example, when switching from the MicaSense RedEdge-P camera to the heavier RGB61 camera, the flight time reduces from 55 minutes to 49 minutes.
- ✓ **Altitude above sea level**  
As the air gets thinner with increasing altitude above sea level, drone flight time is reduced. At the same time, WingtraOne will fly faster in high altitudes, which means that the coverage is only marginally reduced. For example, the RX1R II camera covers 400 ha (988 ac) in 54 minutes at 0-500 m (0-1640 ft) above sea level and 350 ha (865 ac) in 42 minutes at 2000 m (6562 ft) above sea level (with 3 cm (1.2 in)/px GSD).
- ✓ **Transition height**  
Because the WingtraOne uses significantly more energy while hovering, the transition altitude affects flight time. A higher transition altitude will result in a reduced flight time.
- ✓ **Wind**  
In stronger winds, drones consume more energy while flying and landing, which means missions will end up with shorter flight times.
- ✓ **Temperature**  
As temperature influences air density, it impacts flight time directly. Generally, higher temperatures mean lower flight times.

Payload	Take-off altitude above sea level	Max. flight time	Cruise speed	Max coverage at GSD 2cm/px (0.8 in)	Max coverage at 120 m / 400 ft
RGB61	0-500 m 0-1640 ft	49 min	16 m/s 36 mph	110 ha 270 ac	310 ha at GSD 1.9 cm/px 760 ac at GSD 0.74 in/px
RGB61	2000 m 6560 ft	38 min	18 m/s 36 mph	96 ha 235 ac	265 ha at GSD 1.9 cm/px 655 ac at GSD 0.74 in/px
RX1R II	0-500 m 0-1640 ft	54 min	16 m/s 36 mph	90 ha 230 ac	210 ha at GSD 1.6 cm/px 550 ac at GSD 0.63 in/px
RX1R II	2000 m 6560 ft	42 min	18 m/s 40 mph	80 ha 201 ac	180 ha at GSD 1.6 cm/px 440 ac at GSD 0.6 in/px
a6100	0-500 m 0-1640 ft	54 min	16 m/s 36 mph	120 ha 300 ac	240 ha at 2.4 cm/px 600 ac at 0.93 in/px
a6100	2000 m 6560 ft	42 min	18 m/s 40 mph	105 ha 261 ac	210 ha at 2.4 cm/px 520 ac at 0.93 in/px

Reference conditions: one flight, 20 m (66 ft) transition altitude, 1.2 km (0.7 mi) farthest distance from home, < 1 m/s (2.2 mph) wind, 15°C (59°F) air temperature, 60% side overlap (70% for RedEdge-P), high altitude propellers at 2000 m (6560 ft).

For more details, visit [knowledge.wingtra.com/flight-time](https://knowledge.wingtra.com/flight-time)

## Coverage

Coverage is the area of the ground you map in a single flight. For most applications, coverage per flight is much more important than flight time. It is influenced by resolution, flight altitude, sensor size, and side overlap.

The RGB61 camera can cover 40% more area at 2 cm (0.8 in)/px GSD resolution than the RX1R II camera in the same amount of time.

Furthermore, if you need to fly at a limited altitude, for example at 120 m (400 ft), the RGB61 covers more than the RX1R II. The flight with the RGB61 results in a GSD of 1.9 cm (0.74 in)/px, which is a lower resolution compared to the 1.6 cm (0.63in)/px of the RX1R II. Considering this, it is really important to choose the right configuration for your use case and environment.



## Job time

An important point that tends to get missed when focusing on flight time numbers is that job time (and efficiency) is actually not about flight time, but rather about how fast you can acquire data on a given area. For example, compared to multicopters,

the WingtraOne can acquire data up to 11x faster. And compared to most fixed-wings it's twice as fast. So in many cases, the right camera and settings can get you the data you need faster, and faster in fact means less flight time.

## Data collection speed

WingtraOne RGB61



Other fixed-wing drone



Multicopter drones



Numbers refer to most widely used competitor drone and camera models. This number can vary depending on factors such as overlap, camera model and altitude. The model takes into account data collection only. Flight planning, setting up GCPs, data processing, time to relocate between flights are not taken into account in this model.

Up to

11x

faster than multicopter drones

Up to

2x

faster than standard fixed-wing drones

## Results

Maximum expected coverage in one flight at 120 m (400 ft) altitude above take-off point*	RGB61	310 ha (760 ac) 1.9 cm (0.74 in)/px GSD
	RX1R II	210 ha (550 ac) at 1.6 cm (0.63 in)/px GSD
	a6100	240 ha (600 ac) 2.4 cm (0.93 in)/px GSD
Maximum expected coverage in one flight at 2 cm/px (0.8 in/px) GSD*	RGB61	315 ha (780 ac) 128m (315 ft) altitude
	RX1R II	275 ha (680 ac) 155 m (510 ft) altitude
	a6100	205 ha (500 ac) 102 m (330 ft) altitude
Lowest possible GSD	RGB61	0.7 cm (0.28 in)/px at 45 m altitude
	RX1R II	0.7 cm (0.28 in)/px at 53 m (180 ft) altitude
	a6100	1.2 cm (0.47 in)/px at 61 m (201 ft) altitude
Mapping accuracy with PPK (w/o GCPs)	Absolute accuracy (RMS) with RGB61	Horizontal down to 1 cm (0.4 in)
	Relative accuracy	Vertical down to 3 cm (1.2 in) Down to 0.003 %
Mapping accuracy w/o PPK (w/o GCPs)	Absolute accuracy (RMS)	3 to 5 m (9.8 to 16.4 ft)
	Relative accuracy	Down to 0.15 %

## Software & tablet

Flight planning & mission control software	WingtraPilot
Tablet (supplied)	Rugged Samsung Galaxy Tab Active 3, water and dust resistant, MIL-STD-810-certified, WingtraPilot pre-installed

## Data link

Module name	WingtraOne Telemetry 2.4
Main function	Telemetry connection for remote operation
Frequency range telemetry	2.4016-2.4776 GHz
Occupied bandwidth	6.0MHz
Operation mode	FHSS (Frequency Hopping Spread Spectrum)
Typical datarate	57.6 kb/s
Transmission power (EIRP)	19,8 dBm
Tested maximum range	10 km (6 mi) indirect line of sight keep in mind that obstacles reduce the range
Channel spacing	1,0Mhz
Number of channels	76
Channel bandwidth	Low 400kHz High 280kHz
Method of modulation	GFSK

i

In case of many obstacles blocking visual line of sight or BVLOS missions, you can increase the connection loss timeout parameter on WingtraPilot. It defines the maximum time a connection loss of telemetry is tolerated until a mission is aborted. In this case, missions will run uninterrupted even if there is no telemetry connection.

## Battery

Module name	Wingtra Battery 2
Trade name	Lithium-ion battery
Model number	10.00342.02
Battery capacity	99 Wh (a pair of batteries required)
Battery type	Li-ion, smart battery technology, UN compliant ; suitable for carry-on luggage
State-of-charge indicator	Integrated 5 level SoC indicator
Smart charging	Auto cell balancing
Rated energy content	99 Wh
Nominal voltage	14.4 V
Rated charge	7.5 A, 16.8 V cutoff
Rated discharge	35 A, 12 V cutoff
Cell type	Samsung_INR_18650_25R
Configuration	4s 3p configuration
Charging time	1 h
Maximum continuous discharge	35 A
Battery dimensions	80 × 60 × 75 mm (3.15 × 2.36 × 2.95 in)
Battery weight	604 g (1.3 lb)
Operating temperature (take-off)	+10 to +40 °C (+50 to +104 °F)
Operating temperature (in-flight)	+10 to +60 °C (+50 to +140 °F) The drone will automatically return to home in case the maximum battery temperature is exceeded during flight.
Storage temperature (90% capacity recovery)	+0 to +25 °C (+32 to +77 °F)
Shock protection	yes
Overvoltage protection	yes
Undervoltage protection	yes
Temperature protection	yes
Short circuit protection	yes
Material safety data sheet (MSDS)	Available on request

## Battery charger

Module name	Wingtra Charger
Charger type	Dual AC/DC lithium-ion charger
Input voltage AC	110-240 V, 50-60 Hz
Input power AC	350 W
Input voltage DC	11 - 18 V (optional, e.g. for charging from car)
Input power DC	300 W (reduced power possible)
Modes	Charge / storage / balance
Charging cycle	Standard lithium-ion CC-CV cycle
Charging time	1 h
Maximum charge current	7.5 A
Charge end voltage	16.4 V (4.1 V per cell)
Max. discharge current	0.6 A
Discharge end voltage	3.7V (30 % charge)
Additional outputs	USB 5V / 2.1 A
Dimensions	190 × 140 × 70 mm (7.5 × 5.5 × 2.75 in)
Weight	769g (1.7 lb)

## Onboard WiFi module

Main function	Broadcast remote ID
WiFi Standard	802.11a/b/g/n/ac
Frequency	2.4 GHz and 5 GHz frequency bands
Speed	5 GHz: 867 Mbps (802.11ac), 2.4 GHz: 300 Mbps (802.11n)

# Technical specifications cameras



## Full mapping flexibility

Modular payloads	Yes, with a single USB-C connector
Power supply	Flight batteries (up to 45 W)
Payload protection	Yes, maintenance-free integration with full enclosure in main drone body, shock-protection, and smooth VTOL landings
Payloads	<ul style="list-style-type: none"> <li>• RGB61, powered by Sony alpha 7 Mark IV with 24 mm lens, full frame sensor, 61 MP, RGB nadir</li> <li>• Sony RX1R II with 35 mm lens, full-frame sensor, 42 MP, RGB nadir</li> <li>• Sony a6100 with 20 mm lens, APS-C sensor, 24 MP, RGB nadir</li> <li>• Oblique Sony a6100 with 12 mm lens, APS-C sensor, 24 MP, RGB oblique</li> <li>• MicaSense RedEdge-P</li> </ul>
PPK equipped	All drones are equipped with a high-precision GNSS board and antenna to produce centimeter-level accuracy with post-processed kinematic (PPK)

# The fastest mapping drone just got LIDAR

Wingtra LIDAR sets new standards in aerial mapping. Experience unmatched efficiency with user-friendliness and reliability to win more bids and improve construction project designs.



## LIDAR System

Taking ease-of-use, precision and efficiency to the next level

Payload weight (incl. mount)	1030 g
Point density at 45 m AGL (single pass, single return)	110 pt/m <sup>2</sup>
Effective point density in deliverable at 45 m AGL with 50% side overlap	Hard surface: ~220 pts/m <sup>2</sup> (single return) Low vegetation: up to 440 pts/m <sup>2</sup> (dual return) High vegetation: up to 660 pts/m <sup>2</sup> (triple return)"
Effective point density in deliverable at 90 m AGL with 50% side overlap	Hard surface: ~110 pts/m <sup>2</sup> (single return) Low vegetation: up to 220 pts/m <sup>2</sup> (dual return) High vegetation: up to 330 pts/m <sup>2</sup> (triple return)
Effective point density in deliverable at 120 m AGL with 50% side overlap	Hard surface: ~84 pts/m <sup>2</sup> (single return) Low vegetation: up to 168 pts/m <sup>2</sup> (dual return) High vegetation: up to 252 pts/m <sup>2</sup> (triple return)
Maximum coverage for highest density at 45 m (150 ft)	Up to 190 ha (30% side overlap)
Maximum coverage at 90 m (300 ft)	Up to 360 ha (30% side overlap)
Maximum coverage at 120 m (400 ft)	Up to 380 ha (930 ac) (30% side overlap)
Vertical absolute accuracy at 90m (RMS)	Down to 3 cm (1.2 in)

## Scanner

Laser scanner	Hesai XT32M2X
Field of view (horizontal)	90°
Field of view (vertical)	40.3°
Number of returns	3
Sensor type	Rotating sensor
Wavelength	905 nm
Range	0.5 - 300 m 80 m with 10% reflectivity (all channels)
Pulse	640 k/s (single return) 1280 k/s (double return) 1920 k/s (triple return)

## IMU

Inertial measurement unit Inertial Labs Tactical-Grade IMU-P

Pitch/roll accuracy 0.006°

Heading accuracy 0.03°

## GNSS

GNSS system NovAtel OEM7500

Constellations GPS, GLONASS, BEIDOU, GALILEO

Position accuracy 0.5 cm

PPK Yes

## Software

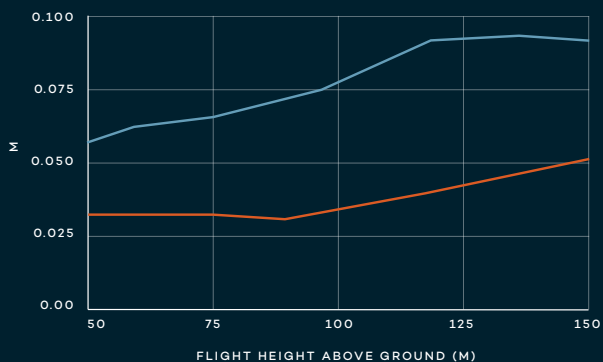
Processing SW Wingtra LIDAR app

Point cloud generation LAS and LAZ

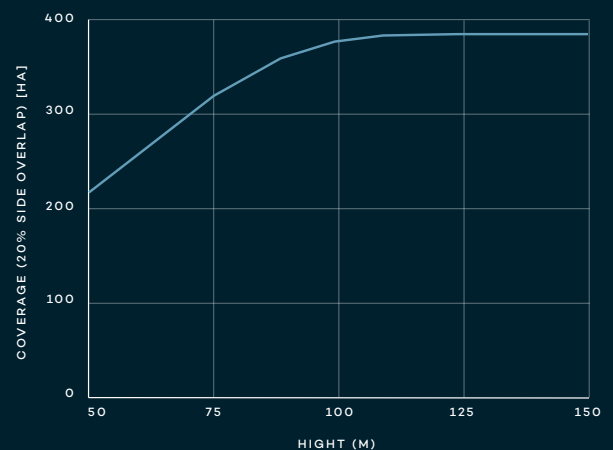
Trajectory correction Yes

### Vertical accuracy and precision

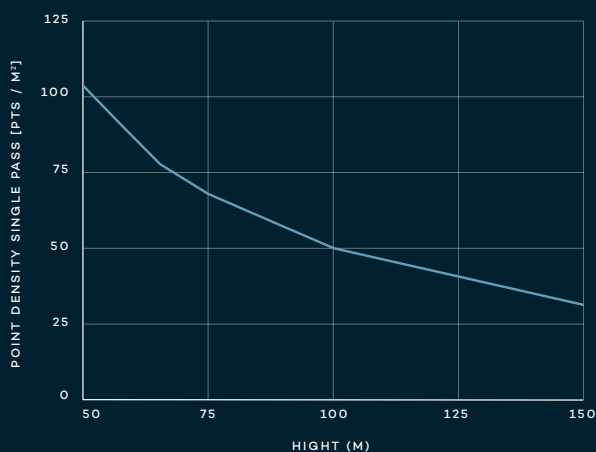
- PRECISION IN RAW POINT CLOUD WITHOUT STRIP ALIGNMENT OR SMOOTHING (PEAK-TO-PEAK ON HARD SURFACES)
- VERTICAL ACCURACY IN RAW POINT CLOUD (AVERAGE Z-VALUE OF CLOSEST 10 POINTS VS TRUE CHECK POINT HEIGHT, Z-RMSE)



### Coverage (20% side overlap)



### Point density



VISIT THE DATASET →



# RGB cameras nadir



## RGB61

High accuracy and most efficient

## Sony RX1R II

High accuracy

## Sony a6100

Most affordable

Technical specification	61 MP, full-frame sensor, 24 mm lens, nadir configuration	42 MP, full-frame sensor, 35 mm lens, nadir configuration	24 MP, APS-C sensor, 20 mm lens, nadir configuration
Payload weight (incl. mount)	709 g (1.56 lb)	590 g (1.27 lb)	550 g (0.73 lb)
Lowest possible GSD	0.7 cm/px 0.28 in/px	0.7 cm/px 0.28 in/px	1.2 cm/px 0.47 in/px
Maximum coverage at lowest GSD*	Up to 110 ha (270 ac) at 45m (150 ft) flight altitude	Up to 90 ha (230 ac) at 55 m (179 ft) flight altitude	Up to 120 ha (300 ac) at 61 m (200 ft) flight altitude
Maximum coverage at 120 m (400 ft)*	Up to 310 ha (760 ac) at 1.9 cm (0.74 in) GSD	Up to 210 ha (550 ac) at 1.6 cm (0.63 in) GSD	Up to 240 ha (600 ac) at 2.4 cm (0.9 in) GSD
Horizontal absolute accuracy (RMS) with PPK (w/o GCPs)	Down to 1 cm (0.4 in)	Down to 1 cm (0.4 in)	Down to 2 cm (0.8 in)
Vertical absolute accuracy (RMS) with PPK (w/o GCPs)	Down to 3 cm (1.2 in)	Down to 3 cm (1.2 in)	Down to 4 cm (1.6 in)
Sensor type	Full frame	Full frame	APS-C
Sensor size x	35.7 mm (1.4 in)	35 mm (1.38 in)	23.5 mm (0.93 in)
Sensor size y	23.9 mm (0.93 in)	23.3 mm (0.92 in)	15.6 mm (0.61 in)
Mega pixel	61	42.4	24.2
Shutter type	Focal plane	Leaf shutter	Focal plane
Pixel in x	9504	7952	6000
Pixel in y	6336	5304	4000
Focal length of lens	24 mm (0.94 in)	32.8 mm (1.29 in)	20 mm (0.79 in)
Focal length (35mm equivalent)	24 mm (0.94 in)	32.8 mm (1.29 in)	29.8 mm (1.17 in)
Vertical field of view	53°	39.2°	42.6°
Horizontal field of view	73°	56.2°	60.9°
Minimal trigger time	0.9 s	0.6 s	1.0 s
Minimal trigger distance	13 m (42 ft)	9.6 m (31 ft)	16 m (52 ft)

# RGB camera oblique



**Oblique Sony a6100**  
3D mapping camera

<b>Technical specifications</b>	24 MP, APS-C sensor, 12 mm lens, low oblique configuration
<b>Payload weight (incl. mount)</b>	730 g (1.61 lb)
<b>Lowest possible GSD</b>	1.6 cm/px 0.63 in/px
<b>Maximum coverage at lowest GSD*</b>	Up to 70 ha (180 ac) at 49 m (161 ft) flight altitude
<b>Maximum coverage at 120 m (400 ft)*</b>	Up to 180 ha (450 ac) at 3.9 cm (1.54 in) GSD
<b>Horizontal absolute accuracy (RMS) with PPK (w/o GCPs)</b>	Down to 2 cm (0.8 in)
<b>Vertical absolute accuracy (RMS) with PPK (w/o GCPs)</b>	Down to 4 cm (1.6 in)
<b>Sensor type</b>	APS-C
<b>Sensor size x</b>	23.5 mm (0.93 in)
<b>Sensor size y</b>	15.6 mm (0.61 in)
<b>Mega pixel</b>	24.2
<b>Shutter type</b>	Focal plane
<b>Pixel in x</b>	6000
<b>Pixel in y</b>	4000
<b>Focal length of lens</b>	12 mm (0.47 in)
<b>Focal length (35mm equivalent)</b>	18 mm (0.71 in)
<b>Front tilt angle (off-nadir)</b>	15°
<b>Horizontal field of view</b>	90° (-45° ... 45°)
<b>Vertical field of view</b>	66° (-18° ... 48°)
<b>Minimal trigger time</b>	1.0 s
<b>Minimal trigger distance</b>	16 m (52 ft)

\* side overlap 80%

## GSD overview RGB nadir cameras

	<b>RGB61</b> High accuracy and most efficient	<b>Sony RX1R II</b> High accuracy	<b>Sony a6100</b> Most affordable
<b>GSD at 120 m flight altitude</b>	1.9 cm/px (0.74 in/px)	1.6 cm/px (0.63 in/px)	2.4 cm/px (0.93 in/px)
<b>Flight altitude</b>	120 m (400 ft)	120 m (400 ft)	120 m (400 ft)
<b>Maximum frontal overlap</b>	85%	89%	83%
<b>Maximum coverage*</b>	310 ha (760 ac)	220 ha (550 ac)	240 ha (600 ac)
<b>Lowest possible GSD</b>	0.7 cm/px (0.28 in/px)	0.7 cm/px (0.28 in/px)	1.2 cm/px (0.47 in/px)
<b>Flight altitude</b>	45 m (147 ft)	53 m (170 ft)	61 m (200 ft)
<b>Maximum frontal overlap</b>	74%	74%	67%
<b>Maximum coverage*</b>	110 ha (270 ac)	90 ha (230 ac)	120 ha (300 ac)
<b>2.0 cm/px GSD</b>	2 cm/px (0.79 in/px)	2 cm/px (0.79 in/px)	2 cm/px (0.79 in/px)
<b>Flight altitude</b>	128 m (315 ft)	155 m (510 ft)	102 m (330 ft)
<b>Maximum frontal overlap</b>	94%	94%	87%
<b>Maximum coverage*</b>	315 ha (780 ac)	275 ha (280 ac)	205 ha (500 ac)
<b>600 meters (1970 feet)</b>	9.5 cm/px (3.7 in/px)	7.8 cm/px (3 in/px)	12 cm/px (4.7 in/px)
<b>Flight altitude</b>	600 m (1970 ft)	600 m (1970 ft)	600 m (1970 ft)
<b>Maximum frontal overlap</b>	95%	95%	95%
<b>Maximum coverage*</b>	1470 ha (3700 ac)	1065 ha (2600 ac)	1100 ha (2700 ac)

# GSD overview RGB Oblique camera

## Oblique Sony a6100 3D mapping camera

<b>GSD at 120 m flight altitude</b>	3.9 cm/px (1.54 in/px)
<b>Flight altitude</b>	120 m (400 ft)
<b>Maximum frontal overlap</b>	90%
<b>Maximum coverage*</b>	180 ha (450 ac)
<b>Lowest possible GSD</b>	1.6 cm/px (0.63 in/px)
<b>Flight altitude</b>	49 m (160 ft)
<b>Maximum frontal overlap</b>	75%
<b>Maximum coverage*</b>	70 ha (180 ac)
<b>2.0 cm/px GSD</b>	2 cm/px (0.79 in/px)
<b>Flight altitude</b>	62 m (203 ft)
<b>Maximum frontal overlap</b>	80%
<b>Maximum coverage*</b>	90 ha (230 ac)
<b>600 meters (1970 feet)</b>	19.5 cm/px (7.6 in/px)
<b>Flight altitude</b>	600 m (1970 ft)
<b>Maximum frontal overlap</b>	95%
<b>Maximum coverage*</b>	840 ha (2075 ac)

\* side overlap 70%

# Multispectral camera



**Micasense RedEdge-P**

<b>Technical specifications</b>	5 multispectral sensors (R, G, B, RE, NIR, 5.5 mm lenses), panchromatic band, 10.3 mm lens, nadir configuration	
<b>Payload weight (incl. mount)</b>	502 g (1.1 lb)	
<b>Lowest possible GSD</b>	2.0 cm/px 0.78 in/px	
<b>Maximum coverage at lowest GSD*</b>	Up to 90 ha (230 ac) at 60 m (190 ft) flight altitude	
<b>Maximum coverage at 120 m (400 ft)*</b>	Up to 160 ha (395 ac) at 4 cm/px (1.57 in/px) GSD	
<b>Horizontal absolute accuracy (RMS) with PPK (w/o GCPs)</b>	Down to 3 cm (1.18 in)	
<b>Vertical absolute accuracy (RMS) with PPK (w/o GCPs)</b>	Down to 5cm (1.97 in)	
<b>Sensor type</b>	5 individual sensors Red, Green, Blue, Rededge, Near-infrared,	panchromatic sensor
<b>Sensor size x</b>	5.04 mm (0.19 in)	8.5 mm (0.33 in)
<b>Sensor size y</b>	3.78 mm (0.15 in)	7.1 mm (0.28 in)
<b>Mega pixel</b>	5 × 1.58	5.1
<b>Shutter type</b>	Electronic shutter	Electronic shutter
<b>Pixel in x</b>	1456	2464
<b>Pixel in y</b>	1088	2056
<b>Focal length of lens</b>	5.5 mm (0.22 in)	10.3 mm (0.4 in)
<b>Focal length (35mm equivalent)</b>	41 mm (1.61 in)	38,6 mm (1.52 in)
<b>Vertical field of view</b>	38.3°	37°
<b>Horizontal field of view</b>	49.6°	44.5°
<b>Minimal trigger time</b>	0.5 s	0.5 s
<b>Minimal trigger distance</b>	8 m (26 ft)	8 m (26 ft)

# GSD overview of multispectral camera

## Micasense RedEdge-P

<b>GSD at 120 m flight altitude</b>	4 cm/px (3.2 in/px)
<b>Flight altitude</b>	120 m (400 ft)
<b>Maximum frontal overlap</b>	80%
<b>Maximum coverage*</b>	150 ha (380 ac)
<b>Lowest possible GSD</b>	2 cm/px (0.78 in/px)
<b>Flight altitude</b>	60 m (195 ft)
<b>Maximum frontal overlap</b>	75%
<b>Maximum coverage*</b>	100 ha (300 ac)

A side-profile view of an orange Wingtra Gen II drone. The drone features a large, curved orange wing and a vertical tail boom. A black motor with two propellers is mounted on top of the wing. A camera is mounted on the tail boom. The drone is supported by a single silver leg on the left and a landing gear on the right. The background is white.

**wingtra**  
GEN II

For a quote, a live demonstration or more information  
on the Wingtra products please contact us via  
wingtra.com or hello@wingtra.com



Wingtra AG

Giesshübelstrasse 40  
8045 Zürich, Switzerland

hello@wingtra.com  
wingtra.com

التقنية الجغرافية  
Geographic Technologies

WWW.GTT.COM.SA